

THIS DOCUMENT CONTAINS PROPRIETARY INFORMATION AND EXCEPT WITH WRITTEN PERMISSION BY AGM CONTAINER CONTROLS, INC. SUCH INFORMATION SHALL NOT BE PUBLISHED, DISCLOSED TO OTHERS OR USED FOR ANY PURPOSE AND THE DOCUMENT SHALL NOT BE DUPLICATED IN WHOLE OR IN PART.

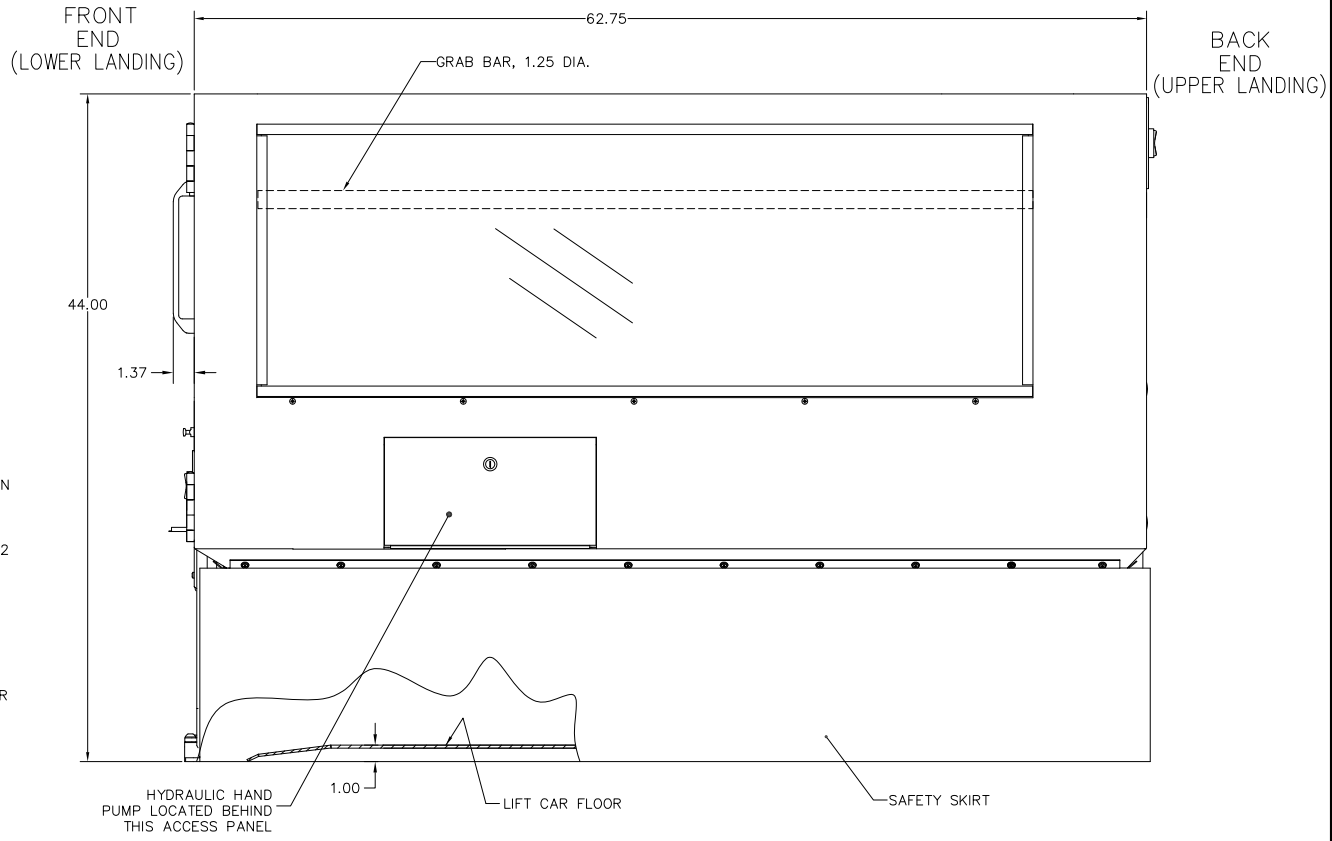
REVISIONS				
ZONE	LTR.	DESCRIPTION	DATE	APPROVED
C5,D1	A	UPDATED SWITCH VIEWS, NOTE 5 WAS 10 AMPS	JMO 08/06/07	EJZ

D
C
B
A

D
C
B
A

8 7 6 5 4 3 2 1

- NOTES UNLESS OTHERWISE SPECIFIED:
- DESCRIPTION: VIRTUOSO PORTABLE WHEELCHAIR LIFT, MODEL 5460P.
 - CHARACTERISTICS:
 - WEIGHT: 1025 POUNDS.
 - MATERIALS:
 - BASE, LIFT CAR, GUIDE RAILS: ASTM A36, ASTM A570, OR AISI 1018-1020 STEEL.
 - DOCK PLATE: ALUMINUM ALLOY.
 - WINDOWS: TRANSPARENT HIGH IMPACT THERMOPLASTIC.
 - SAFETY SKIRT: PLASTIC.
 - FINISH:
 - BASE: POWDER COATED, BLACK.
 - SAFETY SKIRT: BLACK.
 - LIFT CAR: POWDER COATED, COLOR BLACK (-1), OR OPTIONAL COLOR (-99).
 - OPERATION:
 - OCCUPANCY: (1) PERSON.
 - MAXIMUM LOAD: 750 POUNDS.
 - AVERAGE VERTICAL SPEED: 7 FEET PER MINUTE.
 - VERTICAL TRAVEL: 12 TO 60 INCHES.
 - FEATURES:
 - OPERATING MECHANISM: DIRECT-PLUNGER HYDRAULIC.
 - UNIT IS EQUIPPED WITH REMOVABLE WHEELS.
 - UNIT IS EQUIPPED WITH MANUAL HAND PUMP FOR EMERGENCY OPERATION AND/OR WHEEL INSTALLATION.
 - FRONT GATE INTERLOCK PREVENTS OPENING UNLESS LIFT CAR IS AT LOWER LANDING.
 - FRONT GATE INTERLOCK PREVENTS LIFT CAR FROM MOVING MORE THAN 2 INCHES FROM LOWER LANDING UNLESS FRONT GATE IS LOCKED.
 - GATE SENSORS PREVENT OPERATION UNLESS GATES ARE CLOSED.
 - CAR FLOOR AND DOCK PLATE SURFACES ARE SLIP-RESISTANT.
 - DOCK PLATE IS TETHERED TO BACK GATE.
 - ELECTRICAL: 120 VAC, 60 HZ, SINGLE PHASE, 13 AMP.
 - POWER CORD: 20' LONG CORD WITH STANDARD (3) PRONG GROUNDED PLUG AND GROUND FAULT CIRCUIT INTERRUPTER (GFCI).
 - ALL CONTROL CIRCUITS POWERED BY 12 VDC SOLID STATE LINEAR POWER SUPPLY.
 - UNIT MEETS APPLICABLE REQUIREMENTS OF ADAAG, ASME 17.1 1996 OR OLDER, ASME A18.1, AND ANSI A117.1, AS THEY WOULD APPLY TO A PORTABLE LIFTING DEVICE.



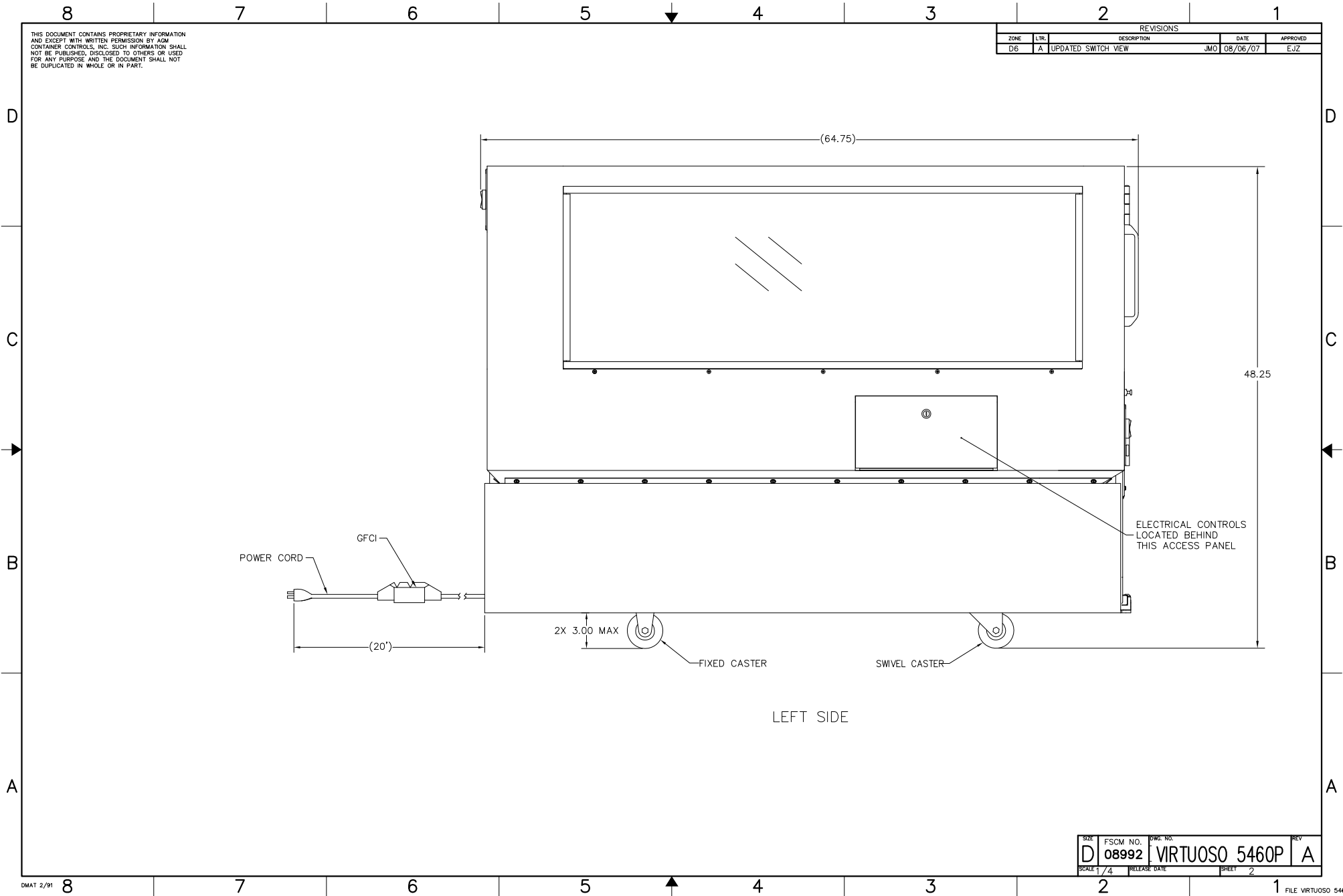
SPECIFICATION CONTROL DRAWING

PART NO.	COLOR
VIRTUOSO 5460P-1	BLACK
VIRTUOSO 5460P-99	OPTIONAL

INTERPRET DIMENSIONS AND TOLERANCES IAW ANSI Y14.5M-1982 UNLESS OTHERWISE SPECIFIED DIMENSIONS ARE IN INCHES DECIMALS: XX.XX ±.030 ANGLES: 0.5° TOLERANCES:		DATE: 3-1-06 DRAWN: A. GRADILLAS CHECK: E. ZUERCHER APPROVED: E. ZUERCHER MANUFACTURING:		OGM CONTAINER CONTROLS, INC. P.O. BOX 40020 - TUCSON, ARIZONA 85717-0020 PORTABLE WHEELCHAIR LIFT ASSEMBLY	
DO NOT SCALE DRAWING FINISH: 2.3		DATE: 8-18-06 CHECK: E. ZUERCHER APPROVED: E. ZUERCHER		SIZE: FSCM NO. 08992 Dwg. NO. VIRTUOSO 5460P SCALE: 1/4" = 1'-0"	
PART DASH NO. / QTY. REQ'D PER ASSY. / NEXT FINAL / NEXT ASSY. / USED ON / APPLICATION		CUSTOMER:		SHEET 1 OF 4	

THIS DOCUMENT CONTAINS PROPRIETARY INFORMATION AND EXCEPT WITH WRITTEN PERMISSION BY AGM CONTAINER CONTROLS, INC. SUCH INFORMATION SHALL NOT BE PUBLISHED, DISCLOSED TO OTHERS OR USED FOR ANY PURPOSE AND THE DOCUMENT SHALL NOT BE DUPLICATED IN WHOLE OR IN PART.

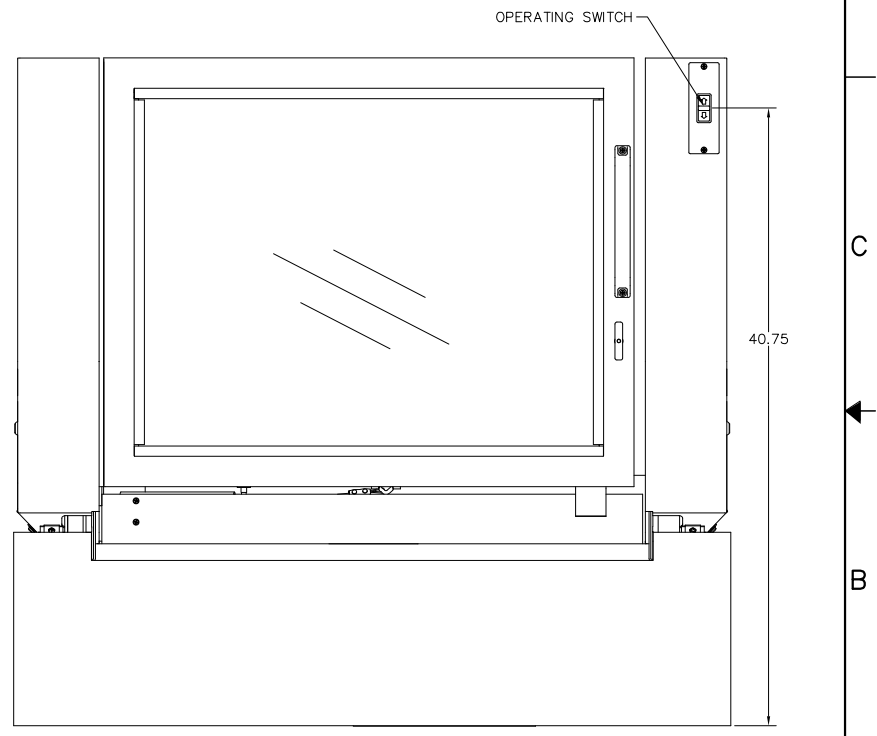
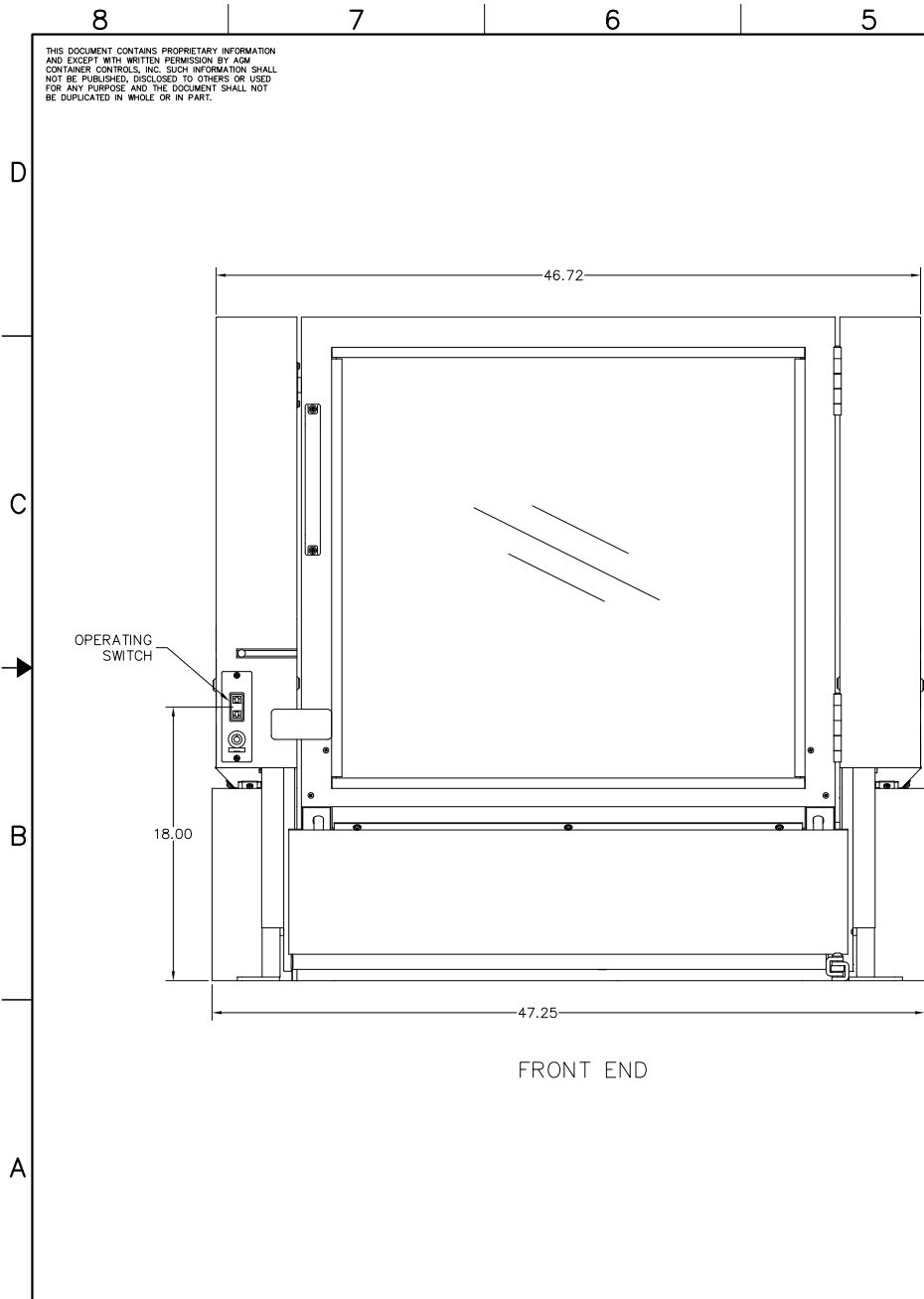
REVISIONS				
ZONE	LTR.	DESCRIPTION	DATE	APPROVED
D6	A	UPDATED SWITCH VIEW	JMO 08/06/07	EJZ



SIZE	FSCM NO.	DIR. NO.	REV
D	08992	VIRTUOSO 5460P	A
SCALE 1/4	RELEASE DATE	SHEET 2	

THIS DOCUMENT CONTAINS PROPRIETARY INFORMATION AND EXCEPT WITH WRITTEN PERMISSION BY AGM CONTAINER CONTROLS, INC. SUCH INFORMATION SHALL NOT BE PUBLISHED, DISCLOSED TO OTHERS OR USED FOR ANY PURPOSE AND THE DOCUMENT SHALL NOT BE DUPLICATED IN WHOLE OR IN PART.

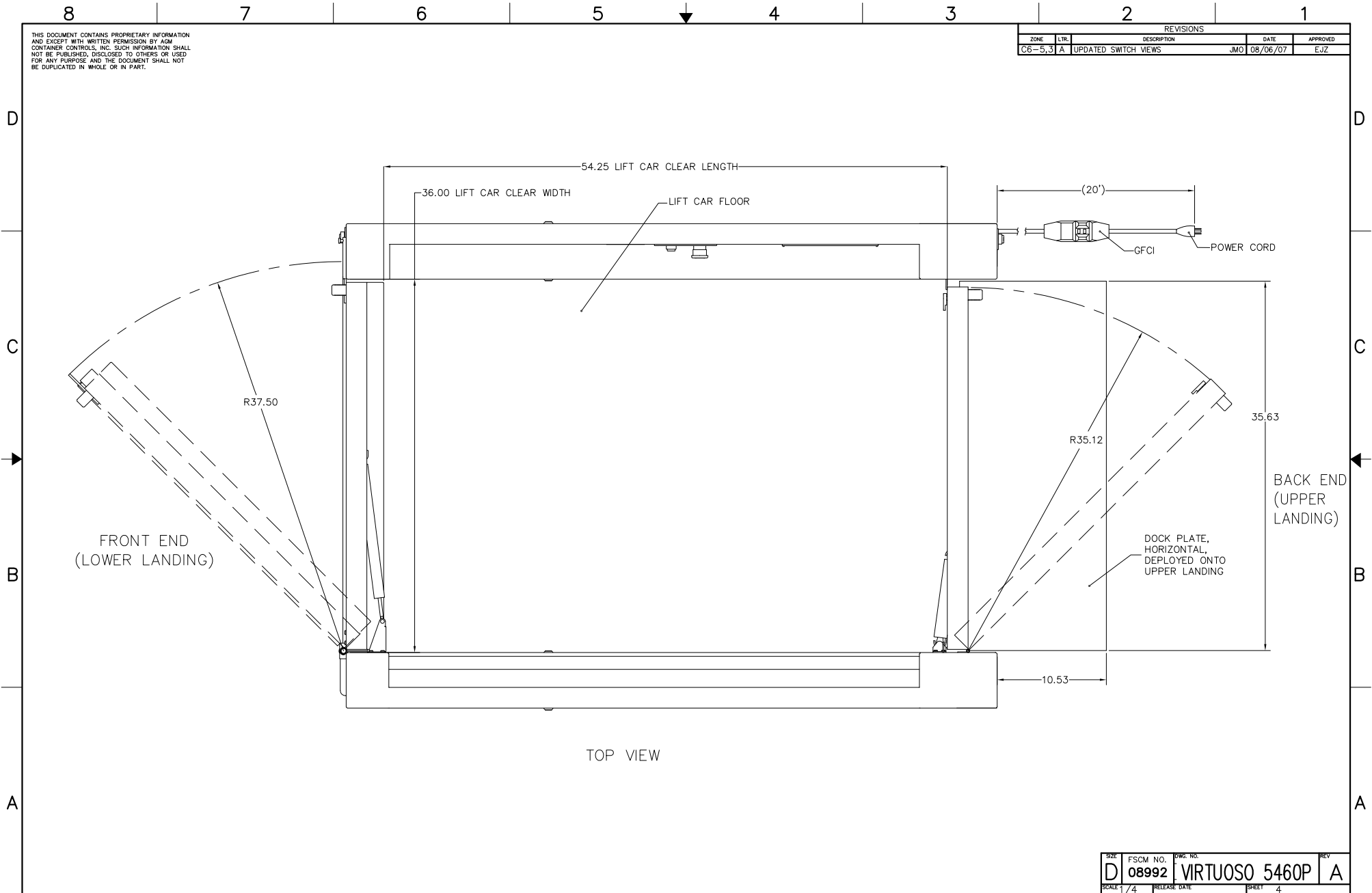
REVISIONS				
ZONE	LTR.	DESCRIPTION	DATE	APPROVED
B7,C7	A	UPDATED SWITCH AND LATCH VIEW, ADDED OVERRIDE KEY	08/06/07	EJZ



SIZE	FSCM NO.	DRG. NO.	REV
D	08992	VIRTUOSO 5460P	A
SCALE	RELEASE DATE	SHEET	
1/4		3	

THIS DOCUMENT CONTAINS PROPRIETARY INFORMATION AND EXCEPT WITH WRITTEN PERMISSION BY AGM CONTAINER CONTROLS, INC. SUCH INFORMATION SHALL NOT BE PUBLISHED, DISCLOSED TO OTHERS OR USED FOR ANY PURPOSE AND THE DOCUMENT SHALL NOT BE DUPLICATED IN WHOLE OR IN PART.

REVISIONS				
ZONE	LTR.	DESCRIPTION	DATE	APPROVED
C6-5,3	A	UPDATED SWITCH VIEWS	JMO 08/06/07	EJZ



SIZE	FSCM NO.	DIRC NO.	REV
D	08992	VIRTUOSO 5460P	A
SCALE	1/4	RELEASE DATE	SHEET 4